

Mesa County

CONNECTION



October 2021

Curse of the Valley

Colorado Mountain Winefest

Grand Junction Car show

R&R

**Discount Car Audio
New Car Stereo
Giveaway!**



**COLORADO
FOOT & ANKLE
WELLNESS**

Dr. Joe Dahlin DPM



**970-433-7547
241 Grand Avenue, Unit #3
www.COFWellness.com**



970-464-1400

**Quality Work,
Affordable Prices**

10% OFF for Seniors & Veterans

\$5 of your job goes to a charity of your choice: **Strive or St. Mary's**

ABOVE ALL

WINDOW CLEANING & SERVICES

\$20 Off Window Cleaning
Any Job Over \$100
Plus a \$30 Gift Card for your next Service With Coupon. Not valid with other offers

20% Off Gutter Cleaning ANY JOB!
With Coupon. Not valid with other offers

\$25 Off Blind Cleaning
Any Job Over \$100
With Coupon. Not valid with other offers

\$20 Off Fireplace Cleaning
Any Job Over \$100
With Coupon. Not valid with other offers



Western Slope's Premier Golf Shop

FULLY STOCKED GOLF SHOP

CUSTOM CLUB FITTING

GOLF SIMULATOR

CLUB REPAIR

LESSONS



Family Owned & Operated

**Come Checkout Our New Equipment
and Clothing Lines**

**625 24 1/2 Rd. Suite C
Grand Junction**

970-208-1030



Dents, Dings, Creases & Hail Damage

\$15 OFF YOUR FIRST REPAIR with this ad
 \$120 Minimum – Extra \$10 off if you Mention Mesa County Connection on Dent Gent Facebook
Call Justin 970-355-4577
www.TheDentGent.com



Men's Haircuts \$14
Women's Start at \$15

569 32 RD. #13a Clifton
 Left side of Urgent Care
970-243-4310

Connecting Community

October 2021

Finally catching partial relief from the smoke is astounding. Even if you can't see the mesa clearly, we are doing better than those dreaded summer days. Hopefully next summer doesn't make us feel like our planet is on fire. Parallels of 19th Century coal pollution are starting to seem similar. It would be nice to know this isn't a common theme we are working up to. 2020 wasn't really the best year for comparison. Fortunately Fall has found us some cooler temperatures. We might even be able to look forward to crisp, clear winter mornings.

This Issue of Mesa County Connection begins the season covering events that you might not have been unaware of. We would like to bring you everything under the Grand Valley's sun. If you know of an event that could interest your neighbors, email us!

Editor@MesaConnection.com

- Pg. 8 PALISADE CONNECTION**
- Pg. 13 GRAND JUNCTION CAR SHOW**
- Pg. 12 COMMUNITY ICON**
- Pg. 16 Dr. JOSEPH DAHLIN**
- Pg. 18 FRIGHTENED OVER WORK CHALLENGES?**
- PG. 19 R&R Stereo Giveaway**
- Pg. 19 TATTOO COVER-UP CONTEST WINNER**
- Pg. 20 CURSES COULD BE WORSE**

Thank you to all our reader's. The magazine got a great response for the first issue. This looks like the start of an awesome relationship! Please let us know if you have ideas that could make Mesa County Connection better!

J.O. Fornwalt

MesaConnection.com

Community Collective



Publishing & Design
Jesse Fornwalt



Sales

970-260-2781

Sales@MesaConnection.com

Edited By
Pam Davison



Published by
Mesa County Connection
2021 All rights reserved.

Community Icon



Luke Feather



Fresh Roasted Coffee

MONDAY- FRIDAY 8am - 6pm

Saturday 9am - 2pm

legacycoffee.com

Shopping Local Makes a Difference!

1048 W. Independent Ave.
#A105

970-241-6558

FREE

GAMES

SCALLYWAGS

BAR and GRILL

WHERE MISCHIEF COMES TO PLAY

October 28th

2nd Anniversary Party Free Keg Starting at 7pm

October 31th

Costume Party & Contest Cash Prizes for 1st, 2nd & 3rd place

Sunday Brunch 10am During Football Season

Buy 1 Get 1 Draft Beers

With this Ad

Limit one coupon per day per person

509 28^{1/2} rd. Grand Junction
970-644-5600

Through October 2021



Clogged Vents & Chimney's Cause Fires!

15% Off Any Services
or

Free Air Filter & Disinfection Fogging

Call Now!

970-639-0127

AIR VENT CLEANING
AIR FILTER REPLACEMENT
DRYER VENTS
CHIMNEY SWEEPING
GAS/WOOD FIREPLACE REPAIR
DUCT CLEANING/ INSPECTIONS



EASTGATE SHOPPING CENTER

BOOTH RENTAL AVAILABLE

Your Schedule Your Rates
Be Your Own Boss

Locally Owned & Operated

By Walk-in Welcome
Appointment Available

970-243-3610

2830 North Ave



Se Habla Español

Individualized Personal Training,
Supplements & Meal plans.



For Men & Women

15+ Years professional Experience

Weight Loss, Body Transformation
Nutrition & Show Prep
Free Consultation

2830 North Ave. 970-985-9106

BMT AUTO

Used Tire Super Store!

New & Used tires

Open 7 Days a week

\$10 off Single tire purchase

\$50 off sets of 4

BRING THIS AD

On The Corner of 14th & Ute.



241 S. 14th St.

970-201-0929

Colorado Mountain Winefest

Palisade is well known for it's wine and peaches. As the small town and surrounding county expands, we find ourselves with more events than a person, or group of friends can attend.

The Colorado Mountain Winefest was a wonderful mixture of wine, women and entertainment.

A band called Alexis provided live entertainment. The ladies singing to the tempo of tasteful county music had wine on the breath and smiles that indicate having a GREAT TIME!

There were demonstrations, venues and wine tasting all around. For one person to try all might provide the floaty feeling of bliss on most faces encountered. Because this event has such an astounding turnout, they may not have realized it was scheduled the same day as the 20th Annual Grand Junction Car show.

Thankfully they schedule the Winefest for two days.

The crowds at each event seem a lot different.

Colorado Mountain Winefest was a secure event that didn't allow kids. Where as the 20th Annual Car show was definitely more family oriented. Regardless of having intercepting events, both The Colorado Mountain Winefest & 20th Annual Car Show proves worthy of attendance!



LEFT to Right: Candy Crespin, Chelsey Franz, Rachel Wood, Amelia Franz, Angelica Garci, Marci Garcia



LEFT to Right: Abbi Whiseant, Page Johnson, Rianne Whiseant, Renee Manzanares



mesaconnection.com

Events

Fruita

October 3

5th Annual City of Fruita Parks and Recreation Youth Scholarship Golf Tournament Adobe Creek National Golf Course
Shot Gun Start at 1 p.m.

4 Person Scramble
Dinner Provided
Team Entry - \$300
Individual Entry - \$75
(970) 858-0360

October 8 (2p) -10 (10pm)

Roam Fest Fruita | A Women's MTB Festival

18 Road Staging Area,
18 Road Trail head
Parking, Fruita, Co
<https://allevents.in/fruita/cycling>

October 12
5:30 to 7:30

Ale Trail Days at Copper Club Brewing

Copper Club Brewing Company
153 N Mulberry St,
Fruita, CO

Join us for prizes, lots of fun and, of course, BEER! Learn more about the Ale Trail and how you can benefit local charities. Download the Donor Trail app from Apple or Google app stores today

October 1-31

Studs Pumpkin Patch & Corn Maze
CLOSED MONDAYS
TUES - THUR
12pm-7pm
FRI 12pm - 9pm
SAT 10am - 9pm
SUN 10am - 7pm

Connecting Community

Palisade

(970) 305-9006
21 ½ and I ½ Road
Grand Junction, CO

Grand Junction

October 9

Fall Day on the Farm at Cross Orchards Historic Site

October 9, 9:00am-3:00pm
to celebrate fall harvest at Cross Orchards Historic Site.

October 13

10am to 11am

Water Walk with Dennis Gorsett

Dive deep into the role water plays in Western Colorado and how it has shaped our past and present and what it will look like in the future.

FREE to the public
3073 F Road

Grand Junction, 81504

October 14

Haunted Halloween Health Fair

THU OCT 14 2021 AT
09:00 AM TO 01:00

Grand Junction Convention Center, 159 Main St,
Grand Junction

healthpromotionwest@anthem.com to RSV

October 16 @ 3:00 pm - 6:00 pm

Spooky Pub Crawl

Join award winning historian and author Dave Bailey on a spooky tour of downtown Grand Junction with stops at 3 local pubs. This walking tour will explore the early and colorful history where the pubs have taken up residence.

All participants must be 21 years of age. Members: \$35, Non Members: \$40
<https://museumofwesternco.com/event/spooky-pub-crawl-16/>
to register

CONNECTION

CALENDAR

CONTINUED
PG. 9

6

DESERT BLOOM
HYDROPONICS

Get Growing!

1 FREE GALLON COMPOST TEA

Made Locally & completely Organic!

HYDR FARM
— Horticultural Products —

970-245-6427

445 Pitkin Ave
Grand Junction

Tequila's

1/2 OFF your Second Entree*

2 Locations

2454 U.S. 6 & 50
970-241-3100

&

2560 North Ave
970-257-9266

CLIFTON TAX SERVICE
Established 1985

- BOOKKEEPING
- CONSULTATION
- TAX PREPARATION

Count On Us For Fast, Neighborly Service At An Affordable Price.

Call Diann Vedsted

970-434-1976

3279 F Rd. # 2
Clifton, Co. 81520
CliftonIncometax.com
CliftonTax1976@gmail.com

GENGHIS GRILL
BUILD YOUR OWN STIR FRY

Savory Sizzling Sensational

Bring your Friend for a \$5 Margarita

ORDER ONLINE!
WE'LL HAVE YOUR ORDER WAITING

GenghisGrill.com
2464 Hwy 6
Grand Junction
970-241-5020

970 CBD

1st & North Ave.
10% off purchase
1119 N. 1st Street Suite C

970 CBD
& AROMATHERAPY
970-424-0441

COLORADO WEEDERY

COLORADO ALTERNATIVE HEALTH CARE
EST. 2009

EITHER 10% OFF YOUR TICKET * STORE

COLORADO WEEDERY
Recreational Cannabis Dispensary
970-464-2777
125 PEACH AVE #A, PALISADE
7 DAYS A WEEK: 9 AM - 8 PM
WWW.COLOWEEDERY.COM
@COLGWEEDEERY
@COLORADOWEEDERY.PALISADE

COLORADO ALTERNATIVE HEALTH CARE
MEDICAL CANNABIS DISPENSARY
970-424-5844
125 PEACH AVE #B, PALISADE
MONDAY - FRIDAY: 10 AM - 6 PM
SATURDAY: 10 AM - 5 PM
WWW.COLORADOALTERNATIVE.COM
@COLORADUALTERNATIVEHEALTHCARE

* MUST PRESENT THIS COUPON *
* EXCL. HONEST MJ CANS *
* DISCOUNTS DO NOT STACK *

Connecting Community

HOMESPUN

shipping & gifts



Skip the hassle!
We offer all
your shipping
services in 1
location
Faxing Too!

M-F 10am to 5:30pm
 Sat 10am to 2pm
 970-644-5060

3225 I-70 bl. a10
Clifton

A wide variety of
unique gifts & classes



A Traditional Barber Shop
located downtown

SCHEDULE IN ADVANCE

schedulicity.com

4 barbers to help you

637 Main St. 970-948-9978



ACME

CHOP SHOP

FROM CONCEPTION TO REALITY, ALL UNDER ONE ROOF

Monday - Friday: 8 am to 5 pm

Saturday: By Appt Only

Sunday: By Appt Only

700 INDEPENDENT AVE. 970-644-5171



20TH ANNUAL GRAND JUNCTION CAR SHOW

Okay, so writing on local events in the Valley doesn't seem to be the easiest endeavor. Announcement might be part of the issue. There certainly is a number of publications to advertise. Maybe The Valley algorithm has subjugated some to solitude. Swan diving off the Social Media platform could potentially make a person loose touch with the mainstream. So what's the alternative? What if every event is only marketed to the highest algorithm score?

The rest are left clueless.

With two major events at once, you could be very well left running around like Mike The Headless Chicken. What to do? Take the family to see a spectacular spectrum of cars developed over the last 100 years, or go out to visit with the girls. The smiles at The Colorado Winefest certainly do distract.

CALENDAR Clifton

Palisade

October 9

Union Of None at Palisade Livery

9pm

215 Main St, Palisade, CO

October 10

Last Day of Palisade Farmer's Market

Donny Morales - Band in the Barrel Music

1:30 - 5:00 PM

3594 E 1/2 Rd, Palisade, CO

Connecting Community

October 18

GriefShare is a friendly, caring group of people who will walk alongside you through one of life's most difficult experiences.

6:30-8:30

Clifton Christian Church
 3241 F 1/4 Rd, Clifton, CO

October 19

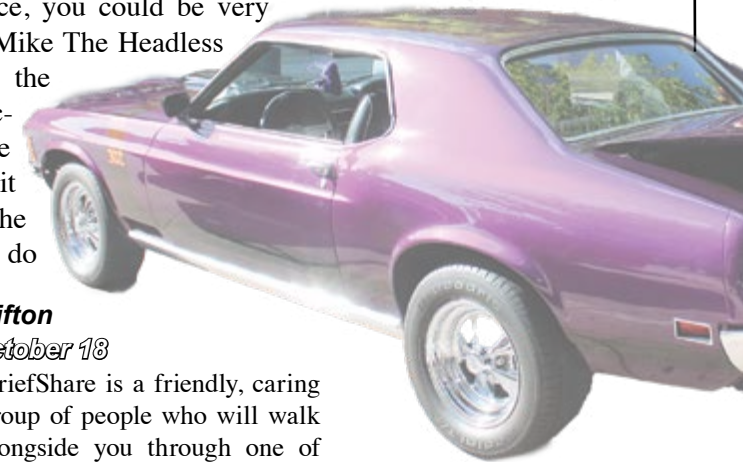
Halloween Cats

Halloween Cats - 16 x 20" canvas

\$30 per person Come create this fun painting with me!

Homespun

3225, I-70BL #A10,
 Clifton, CO 81520



Banjo Dan & The Hallelujah Band



Support Local Music!

970-623-3422

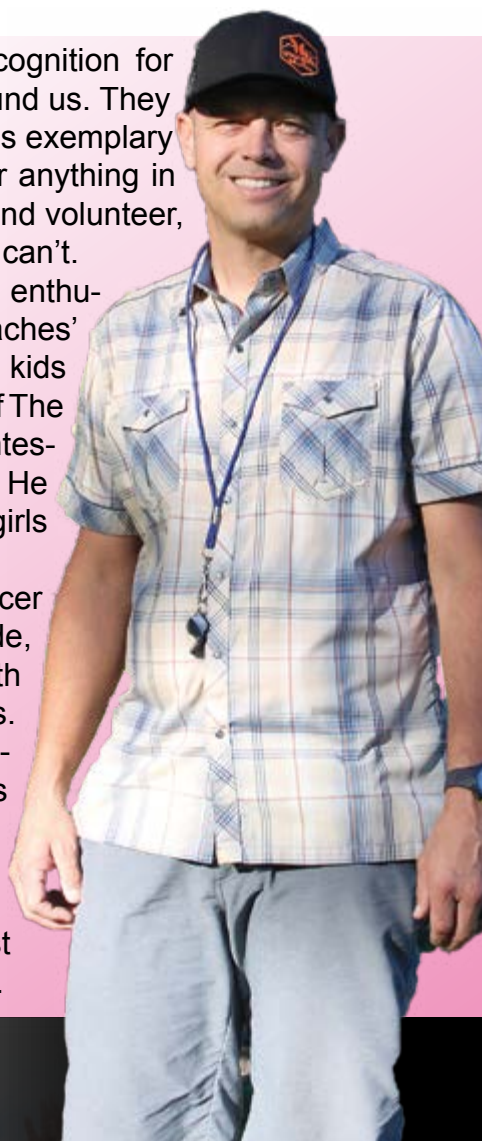
**community
ICON**

People who deserve recognition for selfless tasks are all around us. They serve in the community as exemplary citizens that don't ask for anything in return. They participate and volunteer, stepping up when others can't.

It's wonderful to see the enthusiasm and excitement on little league coaches' faces. They provide inspiration and show kids how to push harder. Coach Luke Feather of The Wolves girls soccer team really is the quintessential figure that should be commended. He takes on the responsibility of mentoring girls to greatness and their full potential.

As a father that has been coaching soccer since his first daughter was in first grade, Luke has been blessing the community with his passion and sincere care for 12 years. Though he was needed to "fill a void" it became something him and his daughters enjoy tremendously. He even helps with the Fellowship of Christian Athletes.

Fall definitely brings out the people that make Mesa County a great place. At least we finally get to mingle with them anyway.



**Where Good Times Are
Always On Tap**



**Order Online
RockslideBrewPub.com**

401 Main St. 970-245-2111

The Zesty Moose[®]
GOURMET
MARKETPLACE
Hand Crafted Since 2007!

*Winery Wine Bar Wine Tasting
Artisan Cheeses Charcuterie
Specialty Foods Spices/Herbs
Vinegar's / Olive Oils
& Much More!*

449 Colorado Ave between 4th & 5th

THE WINE BAR AT
**SHIRAS
WINERY**



LOCATED INSIDE THE ZESTY MOOSE MARKETPLACE

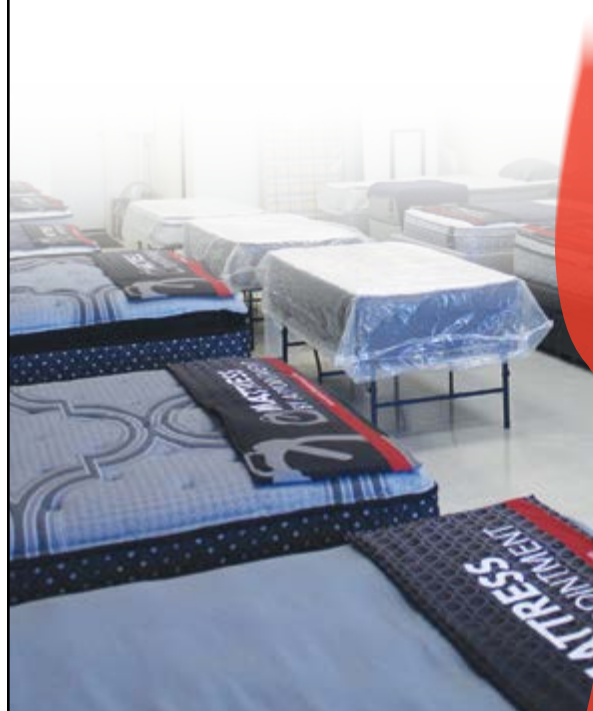
Happy Hour - Fri & Sat 4-6pm. Mention this
Ad for \$5 off Charcuterie Board and
Two Glasses Of Wine



MATTRESS
BY APPOINTMENT[®]

50 - 80% OFF
Retail Price
Queens Starting at
\$125

**Call For your
Appointment Today!**
970-640-4047
Judy Backer
Located in Clifton





Dr. Joe Dahlin DPM

Local ~ Committed ~ Care

Dr. Joe Dahlin knows the stress of being rushed out the door by the strict standards in the medical industry, that's why he wants to take the time to understand his patients and their needs.

At Colorado Foot & Ankle Wellness (COFAW) you can count on quality-driven, modern, mobile podiatry services and podiatric equipment that fits your life. Serving patients in-office, online and house calls from Palisade to Fruita and beyond; COFAW provides unmatched quality of care to patients looking for a comprehensive approach to their foot and ankle medical care.

Dr. Dahlin attempts to treat his patients as family and friends, as he has found this tends to elevate the quality and enjoyment of care for both himself and patients alike.



With a convenient location on 3rd & Grand, Downtown

While some conditions can be diagnosed and treated quickly, Dr. Dahlin prefers to take his time with patients and listen. This develops a healthy doctor-patient relationship and can help reveal more challenging and rare conditions, ultimately resulting in a better experience and quality of care.

- **Xrays**
- **Custom Orthotics**
- **Wart Treatment**
- **Ingrown Toenails**
- **Surgical Correction of deformities**
- **Ulcer Care**
- **Nail / Callus Care**
- **Steroid Injections**
- **Fracture Care**
- **Sports injuries**
- **Plantar Fasciitis**
- **Diabetic Foot Care**
- **CAM Boot / Fracture Walking Boot**

ABOUT DR. JOE DAHLIN

After breaking his ankle 3 separate times in high school playing soccer, he changed his future intentions from business to medicine, naturally finding his niche in podiatry focusing on the lower extremity. When not seeing patients, augmenting his training and education, or enhancing COFAW, Dr. Dahlin can be found actively enjoying the outdoors, often with his three children. Among other things, Dr. Dahlin enjoys mountain biking, gardening, climbing, skiing, camping, playing guitar, reading, hiking, and—most of all—spending time with his children. He appreciates the trust and confidence his patients place in him as it's a pleasure and privilege to provide care.

Visit our website for pricing & appointments!

(970) 433-7547

**241 Grand Avenue, Unit #3
Grand Junction, Colorado 81501**

www.COFAWellness.com

Frightened Over Work Challenges?



No need to fret!

Career Development is here-

The friendly faces at The Workforce Center instill compassion and confidence from entry to exit. There's a certain quality about being greeted with warmth. If you have felt the cold, harsh isolation of being unemployed, it's time to meet the faces of comfort.

From continued education to actual workforce experience, The Workforce Center has multiple programs to help you. The staff assisting you start to finish ease the realities of this struggle. The grant specific to this program allows clients training & tuition assistance for short term certifications and high demand jobs; the most common being Commercial Driver's License and Certified Nurse Assistant. Their goal is to place you in a job you can thrive. No matter where you are at in your career path, The Workforce Center has multiple programs to help you.

- **On-the-job training - They reimburse a portion of wages while learning**
- **Internships - For gaining valuable experience in a desired field**
- **Gas or Bus vouchers to make sure you can get there**
- **Stipends to encourage G.E.D. follow through**
- **Workshops - throughout the months**
- **Job Fairs - Multiple Employers reaching out**



Matching Local Talent To Local Employers

Got Questions?
Call 970-248-0871 or Online
mcwfc.us



Discount Car Audio

\$225 Car Stereo to the car with the oldest Radio

Upload your pic to
MesaConnection.com

20 YEARS EXPERIENCE

LARGE SELECTION

CALL TODAY!

1320 NORTH AVE

970-208-4347

970-256-7373



Sale Every SATURDAY!



Now in the same location



Jacquelynn Chadwick



Jacquelynn Chadwick Says "I got it when I was 22, the artist got upset because I passed out, he was being very heavy handed, so he didn't finish it."

We got you Jacquelynn, Pam is a light handed professional that can turn a nightmare, into a beautiful design she helps you create. Let's get it done so we can print the before & after in the November issue.

Thank you all for participating. Look for other giveaways in every issue of Mesa County Connection.

Alley Katz Tattoo & Body Piercing is located at:

**761 Rood Ave.
 Grand Junction**

**Contact Pam
 970-589-4204**

Cover up Giveaway Winner!

Curses Could be Worse

If you have been here long, chances are you're familiar with our valley's curse. If not, legend has it that the natives cursed the valley and those who dwell in it will be forever forced to return. This curse is only broken if you take dirt from the 4 bases of The Valley. Then, you can leave and not be drawn back. Being cursed seems like something that would be miserable, an affliction that haunts you and makes you cringe. The curse could be minute; however it could also be massive. Even covering an entire valley.

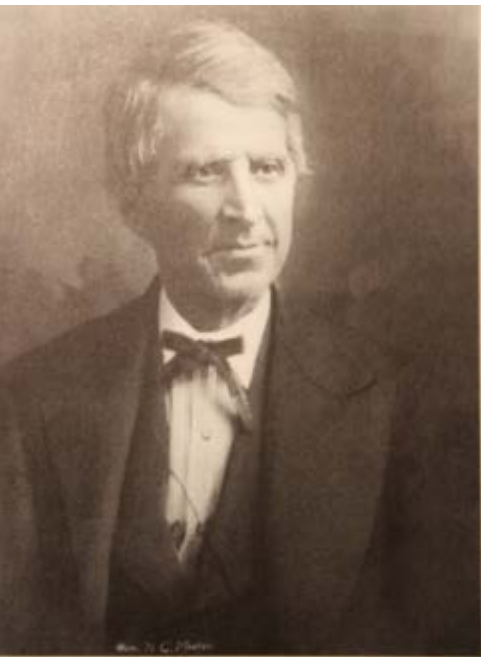


Chief Colorow Front right with band of warriors.
B.H. Gurnsey Photo, Colorado Springs Pioneers Museum.

Research suggests no such "verbalized" curse. The Ute Indians, longest residents of The Western Colorado region according to Thomas Dawson (p.5) were slowly pushed off the land they knew, towards what is now know as the Grand Valley.

"With guns pointed at their heads and recognizing the futility of engaging the U.S. Army in further warfare, the Ute leaders reluctantly signed the peace treaty agreement in 1880" (Campbell 173). As they moved West to their Reservation, the Grand Junction region, they found themselves dealing with Nathan Meeker, agent of Indian affairs. The man was stern in his effort to force assimilation. When he tried to plow one of their horse tracks, the Utes took this as an act of war and slaughtered Nathan and 10 others. Once the Massacre was confirmed, the situation then gained attention from the Federal Government with wails of "The Utes Must Go!" from Anglos neighboring the reservation now know as the Grand Valley. As people started to see the potential of the valley, pressure mounted to push the Ute Indians farther west. In 1886 the Ute people were pushed farther West into the Uintah Basin, Utah.

Because of the racial tension on



Nathan Meeker, Agent at the White River Agency, 1878-79. (Courtesy of the City of Greeley Museums, Permanent Collection)



both sides, it's easy to consider where the rumored "curse" is derived from. Anyone pushed off their land at gunpoint would curse it and those holding the rifle. It's human nature. Just like coming up with silly analogies to perpetuate and rationalize their misery. There are much worse places to live than Mesa County.

The protection from the Book Cliffs, Monument and Mesa offers sheltered from the elements. Storms tend to go around us, we rarely have to deal with snow and we have the longest growing season in Colorado. This must be the most blissful curse we have ever been left to suffer. Better than the Uintah Basin like

the Utes had to deal with.

The picture is painted by both sides, rumors get started which turn into legend. It would be nice to have some solid evidence. However, just like the curse is elusive, so might be the history. Nobody really knows because we weren't there.

Chief Colorow, Sub-Chief of the Ute White River Band. Courtesy of the Smithsonian Institute National Anthropological Archives, James Taylor Album #46, 785-C



Dawson T. & Skiff F.J. "The Ute War A History of the White River Massacre." Johnson Publishing Boulder, CO, 1980.

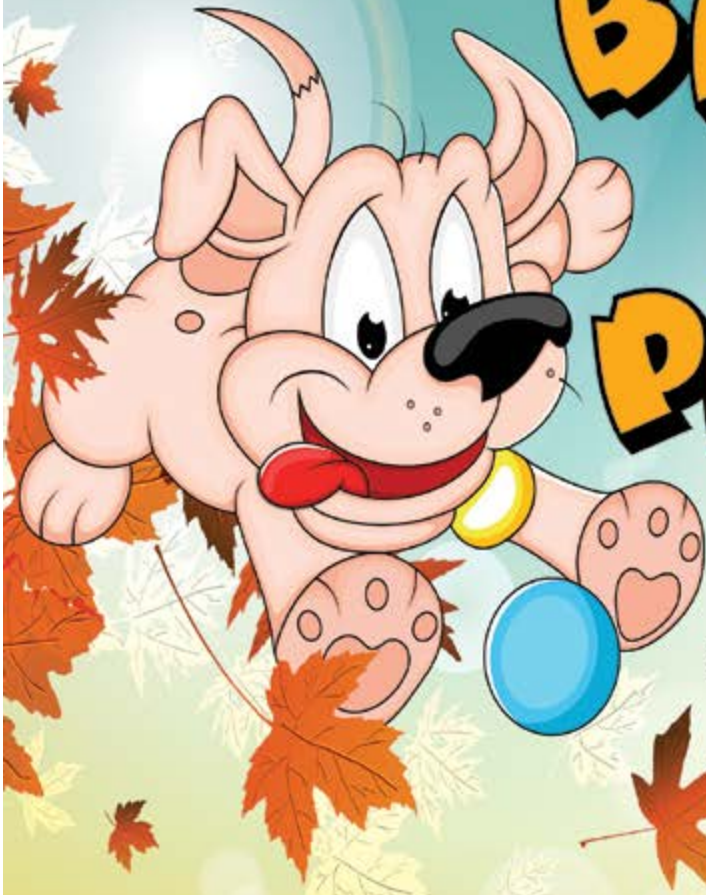
Decker P. "The Utes Must Go! American Expansion and the Removal of a People. Fulcrum Publishing 2004.

Pettit, Jan. "Utes The Mountain People." Johnson Books, Boulder, CO 1990.

RUFF AROUND THE EDGES & **GREYHOUND**
REAL ESTATE

Presents

BARK in the PARK



A Dog Adoption
&
Socialization Event

Bring your pups and join us for a **FREE** day of FUN for the whole family

ADOPTABLE
DOGS

DOG TRAINING
INFORMATION

PET RELATED
SERVICES & PRODUCTS

CONTESTS

PRIZES

FOOD

PUPPIES!

October 24 10 am - 2 pm Lincoln Park

Even the Biggest Disaster can have a



FREE Stain Guard with any Carpet Cleaning!
\$40 Room Special up to 120 sq'

Appointments Today!
970-210-4281

- Emergency Water Removal
- Stain Guard
- Anti Allergy
- Grout & Ceiling
- Carpet
- Tile
- Upholstery
- Shower



Crystals Minerals Fossils

Western Colorado's Largest Selection

Rock Shop & Lapidary Services

Open From 10am to 6pm 7 Days



338 S. 2nd St.
Grand Junction

LIKE US



MoonMountainGems.com



LOCAL
POSTAL CUSTOMER

PRST STD
ECRWSS
U.S. POSTAGE
PAID
EDDM Retail



**Boilers & Furnaces Repaired or
Replaced Today!**

Commercial & Residential

Quality Service - Affordable Rates

**24hr Emergency Service
Plumbing - Heating - Cooling**

Discounts For Veterans & Seniors

Call For Details

970-241-6258

**595 N. Westgate
Grand Junction**

www.AmicoMechanical.com