

September 2022

CONNECTING COMMUNITY

Mesa County

CONNECTION

52ND PALISADE PEACH
FESTIVAL

LANDS END HILL
CLIMB

JESSICA DOWNING-FORD
PLAYS ABIGAIL ADAMS

SUNRISE
ACROSS THE VALLEY



Not just another Thrift Shop!

Selling New & Second hand items
Next to Harbor Frieght in Clifton

3210 I-70 Business Loop

Unit 11 K

Clifton

970-986-8088

Chelsea's THRIFTY SHOP



Now open!

"We carrot about you"

9:00am - 6pm 7 days a week!



Palisade Farmer's Market Sundays Through October

Fruita Farmer's Market Saturdays Through October

Glenwood Tuesdays Through October

Rifle Friday's Through October

970-434-7906

3371 Hwy. 6 Clifton



Grand Valley Specialist

ABR, CRS, GRI, CLHMS, SRES, CDPE, PSA, SFR, CNHS



Sandra Mathewson

Call or Text:

(970)-261-1686

Email:

sandramathewson@gmail.com

Website:

GrandJunctionHomesGuide.com

Location:

120 W. Park Dr. #200

Grand Junction, CO 81505

- Home Buyer Services
- Home Selling Services
- New Home Sales

Serving all of Grand Junction including Redlands, Palisade, Fruita and Loma. 25+ years of experience



TRIDENT

Steel Buildings & Structures

Residential ~ Commerical
Agricultural

30 + years Experience

Call to findout how quickly
we can get your structure up!

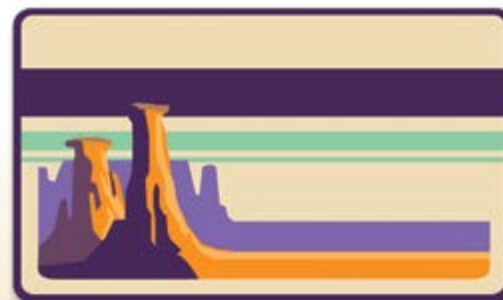
DARREN COOK

970-640-1896

DrDivingllc.com



FREE Estimates



MONUMENT PAYMENTS



Credit card processing
and POS program.

Providing LOCAL merchants with state of the art
payment processing solutions.

*No contract - Competitive pricing - FREE POS program
Cash Discount Program - Local On-site Service -
Technology Custom for your Business*

970-239-1307

info@monumentpayments.com

MonumentPayments.com

SEPTEMBER 2022 EVENTS CONNECTION P.10



PALISADE CONNECTION
54TH PEACH FEST P. 8



LANDS END HILL CLIMB P. 12



LANDS END HILL CLIMB
CONTINUED P. 13



JESSICA DOWNING-FORD
AS ABIGAIL ADAMS P. 15



SUNRISE ACROSS
THE VALLEY P. 16

Acknowledgments

It is my opinion that people do care. They might not always write and tell me, but they care. So do !! People pick up Mesa County Connection every month and tell me about it later. Most of the time an unbiased approach is taken, cynical sometimes, maybe even comical, but for the most part unbiased except for this section right here. If I skim over items that might face us as a nation it's only tracking common themes and their affect on our month.

Most people are affected by the economy, which makes people not spend. This becomes a trend not only here, but everywhere.

Politics are a sore subject right now, so I do my best to stay away from anything in the realm of politics. Maybe a couple of questionable remarks have been made; such as the violence during January 6th, but my audience was here for me to help focus my attention. A lot of work went into the September issue of Mesa County Connection, I hope you enjoy!

CONTACT

970-260-2781

Sales@MesaConnection.com



PUBLISHING & DESIGN JESSE FORNWALT

September seems to be bringing us some relief. Rain is falling better than last year, but reservoirs are still low. The fire season wasn't as bad, and hopefully winter brings us a fruitful snow pack!

Fruit is the theme for this month. Or at least some honorable mentions. The 54th Annual Palisade Peach Festival had an extraordinary turnout. Maybe the best yet. The Palisade Chamber is tracking numbers and will let us know.

Mesa County Connection made a first time appearance at what looks to be a historical event. The Lands End Hill Climb, presented by the Colorado Hill Climb Association offers a unique race on a 5 mile section of Lands End Road up the back side of the Mesa.

Jessica Downing-Ford, a resident and performer of Chautauqua gives a wonderful performance of Abigail Adams, wife and closest advisor to the 2nd President. Last we come to Fruita for an event anybody can participate in. A serene sunrise from

Fruita's Monument exit and Redland View. The colors can

be clearly seen and should be shared with everyone. All the colors for the next few issues will be associated with fall and winter, so we might as well soak up whats left of the summer while we can!

The content of this publication is accurate to the best of our knowledge. Published by Mesa County Connection 2022 All rights reserved.



Edited By Pam Davison

Editor@MesaConnection.com



PICK US UP AROUND THE VALLEY



GRAND JUNCTION

ANB	COPY COPY
ANDY'S LIQUOR	DMV
BANK OF THE WEST	FIRST WATCH
BANK OF COLORADO	FISHER LIQUOR
BANK OF SAN JUAN	FOOD BANK
COURT HOUSE	WORKFORCE
C&F	WESTERN ROCKIES
	MOON MOUNTAIN

PALISADE

C&F	LIBRARY
COLORADO ALTER-NATIVE HEALTH	PALISADE PHARMACY
GRAND VALLEY	THE WEEDARY
BANK PALISADE	
HAPPY CAMPER	

FRUITA

ALPINE BANK	WEST
BANK OF THE WEST	MUNCHIES
COWBOY MERCANTILE	RECREATION CENTER
C & F	SHELL
CITY MARKET	STARBUCKS
FRUITA FAMILY DENTAL	STARVIN' ARVIN'S
FAMILY HEALTH	

GEMS
PRO TIRE
ROCK SLIDE
LIBRARY
LOKI
MAIN St. BAGELS
NEWS RACK POST OFFICE
NEWS RACK 3RD & MAIN
NEWS RACK 6TH & MAIN

CLIFTON

ALPINE BANK	KOKIPELLI
C&F	LIQUOR
DOS HOM-BRES	STARBUCKS
CIRCLE K	STARVIN'
CORONADO	ARVIN'S
LIQUOR	357 RELOADED
EAST VALLEY	CLIFTON LIQUOR
LIQUOR	

DE BEQUE

KUSH GARDENS
KUM & GO
DE BEQUE LIQUORS
DE BEQUE GROCERY & GAS

ORCHARD MESA

CITY MARKET	Library
STARBUCKS	Whitewater Post Office
SMOKER	
FRIENDLY	

DAYLIGHT DONUTS



Now Open!

30 Rd & I-70 BL Grand Junction

10% Off 1 Dozen Donuts
Through 09/2022 with coupon

September Special
\$70 90 mins. Cash Only
Through September 2022

M

MONUMENT BODYWORKS LLC

970-261-9729
Call for an appointment
Located near 7th St. Deli.

- **Medical Massage**
- **Sports Massage**
- **Shiatsu**
- **Hot Stone**
- **Cupping**
- **Gua Sha**

KIVA ACCOUNTING LLC

Tax Returns & Bookkeeping

Affordable rates for individuals and Small Businesses!

Special Rates for High School and College Students. Free if we do your parents.

3002 I-70 Business Loop

970-254-9027

PALISADE *Connection*

PEACH Festival

The 54th Annual Palisade Peach Festival attracted huge crowds to this small corner of our valley. People couldn't wait to get in and see what was awaiting. From entertainment for the kids, to drinking and live music for the adults, the ladies at the Palisade Chamber of Commerce say the turnout was, "super amazing!"

It's very clear this festival is one of the most popular events around the valley. People didn't mind having to wait in lines that were attributed to nearly 17,000 to 18,000 visitors. According to Natalie Schievelbein, Assistant Director to the Chamber of Commerce, "this is one of the largest Peach Festivals we have seen". Although they haven't obtained official numbers yet, the Palisade Chamber says they are excited to see them.

Natalie (left), Jessica Burford (middle) and Angelia Decrow (right) worked diligently with volunteers and security to accommodate the numbers. Natalie says, "we definitely couldn't have done this without the support of sponsors, volunteers and vendors".

The City of Palisade, Chamber of Commerce and entertainers have done a wonderful job of providing people with plenty of activities to keep the atmosphere fun and delightful. The ladies are already considering next year's event and want to bring in even more activities.

This celebration of Palisade's quintessential fruit was on display by various vendors. They bring unique peach creations and their surplus from local orchards to an enthusiastic crowd.

As live music is played throughout the event, families settle in on blankets, or explore the *Bounce House City*. People



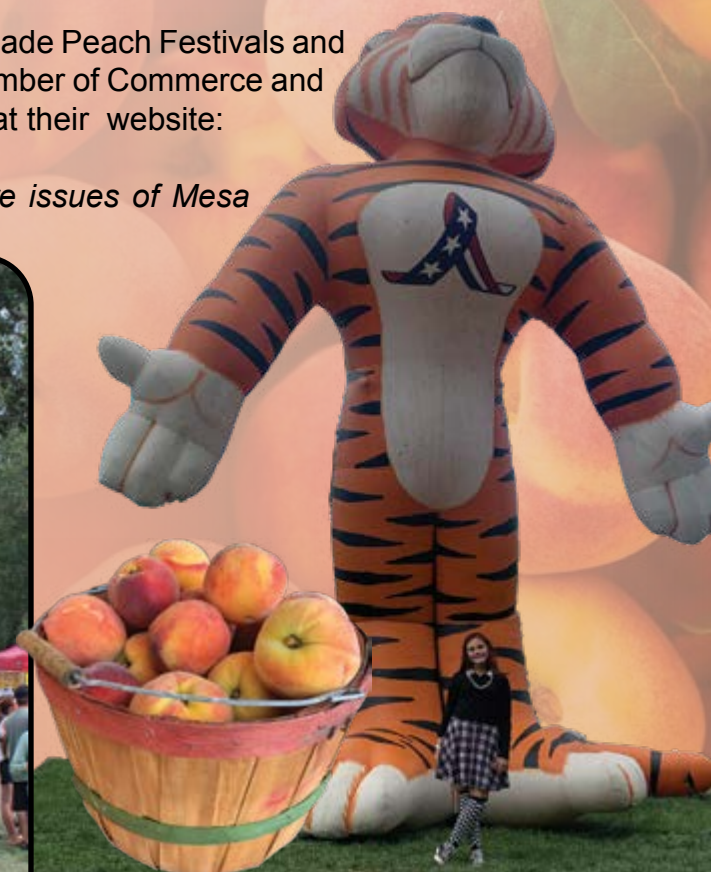
line the market place of vendors elbow to elbow perusing delectable items for home. Great vibes and smiles are all around.

River Bend Park was alive with excitement on this Saturday August 13th, 2022. The event was sold out for on-line sales, but that didn't stop people from coming down to checkout the activities and produce. Since it had such a great turnout it will be interesting to see what future Peach Festivals have in store for us!

View information on future Palisade Peach Festivals and other events The Palisade Chamber of Commerce and The city of Palisade is hosting at their website:

<https://palisadecoc.com>

or Keep your eye out for future issues of Mesa County Connection!



Grand Junction

September 2, 3

Banda El Recodo

Friday

9:30

Saturday

1:30

Grand Junction Convention Center

159 Main St, Grand Junction, CO

\$95 Unation.com

September 2

FREE BEER - Classic Rock Band

8:30 - 11:30pm

Warehouse25sixty-five Kitchen + Bar

2565 American Way, Grand Junction

FREE SHOW**

September 3

Rick Mancuso

8:30 - 11:30pm

Warehouse25sixty-five Kitchen + Bar

2565 American Way, Grand Junction

Live Country Music FREE SHOW**

September 5

Dorothy

7 - 10 pm

Mesa Theater

538 Main St, Grand Junction, CO

All ages

\$19-\$24

September 5

Dorothy

7 - 10 pm

Mesa Theater

538 Main St, Grand Junction, CO

All ages

\$19-\$24

September 7

“Weird Al” Yankovic

7:30 - 11:30

The Avalon Theatre

645 Main St, Grand Junction, CO

Doors open at 6:30 PM Tickets:

\$57.50/\$77.50/\$87.50/\$97.50 +fees

September 7

Grand Junction Rockies vs.

Rocky Mountain

Vibes

6:30

Suplizio Field

1315 North Ave, Grand Junction, CO

September 8

Books on Tap - Foam & Folly Brewing

5:30pm

Foam & Folly Brewing

330 S 2nd St, Grand Junction, CO

September 8

PRIDE 2022: Junction Queer and Ally

Connection Fashion Show

7:30 - 10pm

Mesa Theater

538 Main ST

Grand Junction

\$10 - Family friendly

September 8

Humanists Doing Good

5:30 - 8:30pm

Main St · Grand Junction, CO

Please only RSVP if you'd like to assist with

the booth and not if you're just planning to

visit the booth during the market.

September 9

The Harp Twins

8 - 11pm

Mesa Theater

538 Main St, Grand Junction, CO

All ages.

\$20

September 9

TR @ Avalon Rooftop

6pm

645 Main St, Grand Junction, CO

Celebrating a couple birthdays! There will

be cake!

September 9

Oxymorons

8 - 11pm

Warehouse25sixty-five Kitchen + Bar

2565 American Way, Grand Junction

ENOUGH SAID... Bring those dancin

shoes it's always a PARTY when these

guys hit the big stage!

FREE SHOW**

September 10

Tour of the Moon

7:30am - 6pm

Grand Junction Convention Center

159 Main St, Grand Junction, CO

The Tour of the Moon was made famous

in the 1980's Coors Classic and later in the

cycling movie American Flyers

\$150

September 10

Southside Highway

8:30 - 11:30pm

Warehouse25sixty-five Kitchen + Bar

2565 American Way, Grand Junction

September 11

Sets n' Riffs Comedy Show

7 - 8:30pm

Gemini Beer Company

640 White Ave, Grand Junction, CO

Come try stand up comedy with a 2 min-

ute stand up set then riff with our panel of

comics!

September 11

Evening in Rio with the Best of Brazil

7:30 - 11:30pm

The Avalon Theatre

645 Main St, Grand Junction, CO

Tickets Starting @ \$39



Located in Orchard Mesa



We love to see your smiling faces! Our store front has quickly become the heart of our bakery! Getting to serve our community daily is what we were made for!

Come see us, grab a cup of coffee or a pastry and hangout with us. We promise you won't leave unfulfilled

Mention you saw us in Mesa County Connection for a free drink. One time offer per customer.



Calendar

CONTINUED P. 20

Lands End

HILL CLIMB



It's an absolute pleasure to watch a Colorado Hill Climb Association event! We even get one right here in Mesa County each year. The Lands End Hill Climb offered adrenaline from start to finish. A feeling of anticipation dwells in the gut waiting for these loud, nostril burning cars to turn the treacherous corners.

Lands End Hill Climb, which shuts down a portion of Lands End Road each year, attracts a wide range of vehicles for the two day event. Coming from all over Colorado, the drivers of these radically different vehicles have one thing in mind; making the best time for their classification.

Two racers from the Grand Valley, John Durmas and Larry Thompson are seasoned in the sport and hopeful to bring home first place ranks, but seem more interested in just being apart of the race. John on the left driving number 19 says he's been apart of these races for 7 years, while Larry, driving car 24 has been doing it for 29! Though neither

one got first, they competed in multiple classes allowing them two 3rd place wins for John and a 2nd & 4th for Larry. Neither one of them let 1st be taken easily. Roaring around dirt corners fearlessly with rooster tails and dust behind them, these drivers gave their absolute best.

That is the only way to get a good show! All of these drivers should be applauded for giving their best. Most people use extreme caution when taking this route to the Mesa. Filled with hair-pin corners and shear drop offs, the vertigo from looking over while driving slowly can give a person motion sickness, let alone upwards of 80 miles per hour.

John says they have a radar and clock cars at over 80 mph. The racers do 5 miles in just over 5 minutes. They have had cars flip over in the past, but were fortunate this year to only have minor issues.

This alternative sport was wonderful to spectate. It would be beneficial to scope out a great spot for next year and come prepared to barbecue!



GENGHIS GRILL
BUILD YOUR OWN STIR FRY

Savory Sizzling Sensational
1/2 OFF Second Entree*
Through September 2022
Order Online!
We'll have your order waiting
GenghisGrill.com
2464 Hwy 6 Grand Junction
970-241-5020

ASR
ALL SEASONS RENTAL
RENTAL · SALES · SERVICE

Husqvarna HUSTLER TURF EQUIPMENT **hotley**

- Under new ownership
- Family Owned Locally
- We service what we sell

FREE HIGH QUALITY EYE PROTECTION with \$500 Rental, Sales or Service

970-241-4368
2956 I-70 Business Loop



JUNCTION CONNECTION

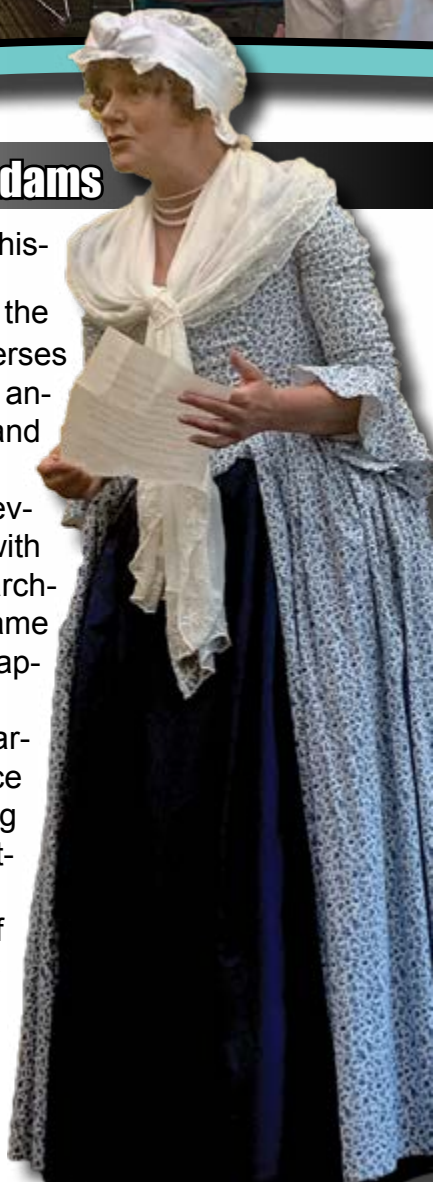
Jessica Downing-Ford Playing Abigail Adams

Chautauqua is the Performing Art of a historical figure done in 3 parts. The voice over gives the character depth, while playing the character immerses the audience in the scene. Questions follow for answers from someone who has studied the figure and has a firm understanding of how to answer.

Because Abigail Adams was a person we never got to see or hear, it's up to Jessica to come up with her version of what Abigail might sound like. Researching the era and location of where Abigail Adams came from, Jessica was able to represent the voice and apparel of the time.

Her passion for the subject matter and character are obvious. She gives a great performance reading letters from Abigail to John Adams outlining exactly who she was to the 2nd President of the United States.

Jessica answers questions in and out of character which allowed the audience to ask more questions surrounding why she picked the character she did, who she will play next and where... We were lucky to catch her at Mesa County Library downtown Grand Junction late July 2022, where she will be performing in the future.



PAKRAT CREATIONS

LASER ENGRAVING
Wood - Metal - Stone

Order online or Call
for Custom work!



PakRatCreations.com 970-773-5810



SUNRISE ACROSS THE VALLEY

These images speak for themselves. There isn't a more quite and serene place in the valley than Fruita's Monument exit at sunrise. That is for you to judge.

A favorite Sunrise Across The Valley is a matter of perspective. Last month's sunrise imagery was from on top of the Bookcliffs, this time we are in Fruita. It's only a matter of perspective.

This is an event people are welcome to everyday, and most are filled with magical colors that invoke a feeling of oneness with the universe. This is the reason we live in Mesa County! It takes 20 minutes to get here and is great anytime of the day, but mostly in the very early hours unobstructed by anything the day will bring.

Quiet, peaceful, and serene seem to be the most appropriate words here; as if any are needed.



JUDY'S Mattress Warehouse

**INVENTORY
CLEARANCE
EVENT**



**THROUGH
SEPTEMBER**
Queens Starting at
\$125

Call For your
Appointment Today!
970-640-4047
Judy Backer
Located in Clifton

**S
H
O
DESIGN**



"We Fit You Right"

**M-F 9:30am to 5pm
Sat 10:30am to 4pm**

**Bio Mechanical alignment
of feet and ankles.
Pain Relief Footwear
Correction and Prevention
of foot problems.**

R. Mario Calderone

Certified Pedorthist

**648 Main St.
Grand Junction
970-243-4777**



BETTER QUALITY CARE

Get back on your feet with medical care the way it was meant to be.

Feel like a person, not just a patient

Don't let your insurance company dictate your medical care. Experience a personal, refreshing approach to your foot and ankle care.



COLORADO
**FOOT & ANKLE
WELLNESS**
DR. JOE DAHLIN

- Complete foot & ankle care
- Same day/next day appointments
- More time with your physician resulting in better quality care
- Fair & transparent pricing
- No referrals or pre-authorizations needed. Insurance not accepted.

LEARN MORE AT COFAWELLNESS.COM

SPORTS MEDICINE • CUSTOM ORTHOTICS • TRAUMA & INJURY
BUNIONS & HAMMERTOES • DIABETIC FOOT & ANKLE CARE
WART, CALLUS & NAIL CARE • X-RAYS & SO MUCH MORE!



(970) 433-7547

241 Grand Ave, Suite #3
Grand Junction, CO

\$50
X-Rays!

60 MINUTE INITIAL CONSULTATION
EXAM & TREATMENT PLAN \$200

60-90 MINUTE INITIAL CONSULTATION
FOOT & ANKLE X-RAYS, EXAM AND TREATMENT
PLAN \$300

*Call today to
schedule your
consultation!*



**CUSTOM GRAPHICS
MADE RIGHT HERE IN
GRAND JUNCTION**

WWW.LVIGRAPHICS.COM

 @LVIGRAPHICS

**MENTION THIS AD
TO GET 10% OFF**



METALSTACKS

Precious Metals Collectors Club



DROP THE BANK

Earn & Save Your Wealth Independently

BULLION OR COIN

**Wholesale & Dealer
Direct Pricing!**

FOR MORE DETAILS

**Call Tom O'Brien
Today!**

970-787-0923

OR

WWW.METALSTACKS.COM/OBrien1

Now Tinting Windows!




\$10 OFF ANY TINT PACKAGE
\$20 OFF PAINT PROTECTION FILM PACKAGE

like us on Facebook for extra savings 

Call Justin 970-355-4577
www.TheDentGent.com

Daniel Shaffer

Law *A Talent For Strategy*

CRIMINAL DEFENSE & CIVIL RIGHTS VIOLATIONS



FREE Evaluation & Consultation

970-243-2552
DanielShafferLaw.com

Grand Junction

September 15
Mark Chesnutt
 7 - 11pm
 Warehouse25sixty-five Kitchen + Bar
 2565 American Way, Grand Junction
 Mark Chesnutt is a true Honky Tonk legend and he's bringing his 14 No. 1 hits and rockin live show to the Warehouse
 \$40 - \$85

September 17
Mesa County Comic Con!
 10am - 6pm
 Grand Junction Convention Center
 159 Main St, Grand Junction, CO

September 17
Mobility Driven Downtown Car Show
 9am - 3pm
 Downtown Grand Junction
 101 S 3rd St Suite 100, Grand Junction

September 21
Melissa Etheridge and Keb' Mo'
 7 - 11pm
 Amphitheater at Las Colonias Park
 925 Struthers Ave, Grand Junction, CO
 , Melissa Etheridge has been one of folk-rock's most resonant voices!
 \$39.50 GA Lawn / \$65 Reserved / \$75

September 24
Colt Ford
 6:30 - 11:30pm
 Warehouse25sixty-five Kitchen + Bar
 2565 American Way, Grand Junction
 The MAN COLT FORD is back with guns a blaszin
 \$25-\$40

September 24
Rock and Gem Show
 9am - 4pm
 Mesa County Fairgrounds
 2785 US-50, Grand Junction, CO
 Save the date now, for the Annual Grand Junction Rock Show.
 FREE SHOW**

CALENDAR

CONTINUED

September 24
Walk to End Alzheimer's
 9am - 12pm
 Lincoln Park
 910 N 12th St, Grand Junction, CO
 Our Walk to End Alzheimer's is our biggest event of the year where we gather and walk together to find the first survivor of the Alzheimer's disease.

September 27
BLACKHAWK
 7 - 10pm
 Warehouse25sixty-five Kitchen + Bar
 2565 American Way, Grand Junction
 HIS SHOW Originally scheduled for Sept. 8th is MOVING to September 27th * ALL TICKETS ARE VALID FOR THE NEW

Palisade

September 2
Food Truck Friday
 6:30 - 9:30pm
 Talon Wines at St. Kathryn's
 785 Elberta Ave, Palisade, CO
 Join us this summer for our annual Food Truck Fridays on the first Friday.

September 3
Band in the Barrel - Soul Habit
 1:30pm
 We are excited to welcome Soul Habit for this Band in the Barrel Concert.

September 3, 4, 5
Women's SUP, yoga and hiking retreat!
 1:30pm
 Life's 2 Short Fitness
 Palisade Co
 Over four days we will experience the best outdoor activities Colorado has to offer including: Hikers, nature lovers, trail runners, adventure seekers: Join us.
 \$1,550

September 4
Jitensha @ Palisade Brewing Company
 2pm
 Palisade Brewing Company
 200 Peach Ave, Palisade, CO
 A lively evening of music with the Jitensha duo, featuring rock and pop hits 90s to today and original indie rock. Jitensha is a husband and wife indie rock duo from Montréal.

September 4
Palisade Sunday Farmers Market
 9:30am - 1:30pm
 Main and, E 3rd St, Palisade, CO

September 10
Live Music | The Violet Pines
 5 - 8pm
 Talbott Farms Inc
 3800 F 1/4 Rd, Palisade, CO
 Stop by our Farm Market and Taproom to enjoy a cider and groove to live music from The Violet Pines

September 11
Palisade Sunday Farmers Market
 9:30am - 1:30pm
 Main and, E 3rd St, Palisade, CO

September 11
Wine Tasting E-Bike Rentals %26 Guided Tours
 Paddleboard Adventure Company
 3816 N River Rd, Palisade, CO
 Travel to Palisade wineries in style on Paddleboard Adventure Company's (PAC) fleet of electric bikes.

Continued 

Palisade

September 15

Maison la Belle Vie Wine Dinner

5:30 - 9:30pm

Enjoy a food and wine experience like never before with a 5-course meal paired expertly with beautiful wines by Maison la belle Vie and Chef Micah.

\$130

September 15

Colorado Mountain Winefest Camping Trip (Palisade, CO)

Friday 5pm - Monday 10am

Riverbend Park

451 Pendleton St, Palisade, CO

Palisade Basecamp RV Resort

<https://palisadebasecamp.com/>

970-370-9734

September 17

Colorado Mountain Winefest

10:30am - 5pm

Riverbend Park

451 Pendleton St, Palisade, CO

September 18

Palisade Sunday Farmers Market

9:30am - 1:30pm

Main and, E 3rd St, Palisade, CO

September 18

Sturtz @ Mesa Park Vineyards

1pm

Mesa Park Vineyards

3321 C Rd, Palisade, CO

September 24, 25

2nd Annual Palisade Art Festival

Saturday 10am

Sunday 5pm

Veterans' Memorial Park

120 W 8th St, Palisade, CO

September 25

Palisade Sunday Farmers Market

9:30am - 1:30pm

Main and, E 3rd St, Palisade, CO

Fruita

September 3, 10, 17, & 24

Fruita Farmers Market

8:30am - 12pm

Fruita Farmers Market

250 S Elm St, Fruita, CO

September 6

Dog Daze

4 - 6pm

Fruita Community Center

324 N Coulson St, Fruita, CO

Calling all doggos and puppies!

Our annual Dog Daze is Tuesday, September 6 from 4-6 P.M. We will be taking donations for Roice-Hurst Humane Society. Check-in will be at the gate, pool side. Please keep your dog on a leash until permitted into the outdoor pool.

September 17

50th Annual Latin Anglo Alliance Foundation Golf Scramble

8am - 3pm

Adobe Creek National Golf Course

876 18 1/2 Rd, Fruita, CO

Join us for the 50th Annual Latin Anglo Alliance Foundation Golf Scramble! Has LAAF impacted your life? Be sure to save the date!

September 23

Fruita Fall Festival

5 - 9pm

Fruita Area Chamber of Commerce

432 E Aspen Ave, Fruita, CO

September 23

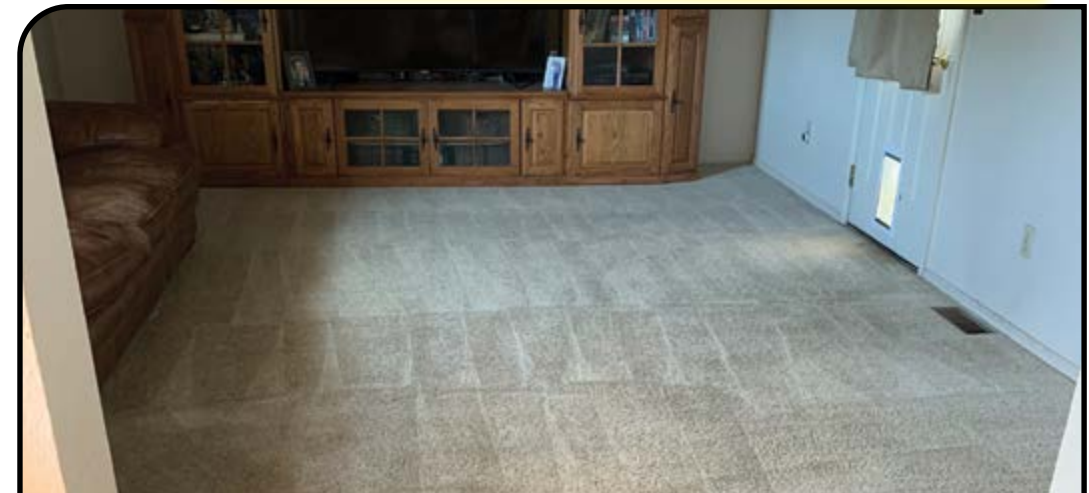
Roam Fest Fruita | A Women's MTB Festival

8am

18 Road Trailhead Parking

Loma, CO 432 E Aspen Ave, Fruita, CO

Explore all upcoming animal house events in Fruita, find information & tickets for upcoming animal house events happening in Fruita.



1 FREE room carpet cleaning with 3 other rooms

- Emergency Water Removal
- Stain Guard
- Anti Allergy
- Grout & Ceiling
- Carpet
- Tile
- Upholstery
- Shower

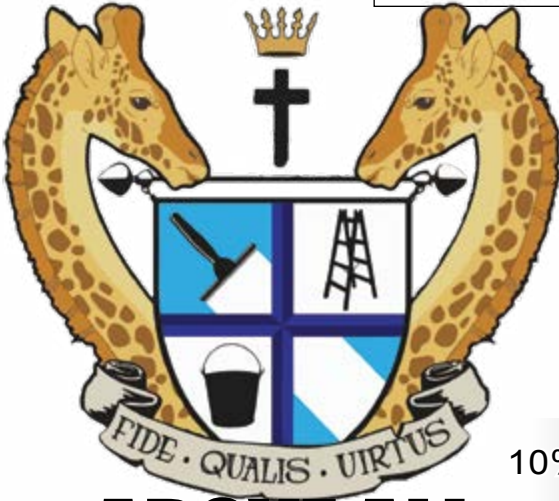
FREE Stain Guard with any Carpet Cleaning!

\$40 Room Special up to 120 sq'

970-210-4281 GetYourCarpetsCleaned.com

LOCAL
POSTAL CUSTOMER

PRSR STD
ECRWSS
U.S. POSTAGE
PAID
EDDM Retail



970-464-1400

*The best quality,
The best price.
You deserve the best!*

10% OFF for Seniors & Veterans

ABOVE ALL

WINDOW CLEANING & SERVICES

SAVE **Quarterly Cleaning Club**
15% **ON ALL SERVICES!**
Carpet cleaning, window cleaning, vent cleaning to
Covid home sanitations.

\$50 OFF Any Service
With Coupon. Not valid with other offers.

20% Off Gutter Cleaning
ANY JOB!
With Coupon. Not valid with other offers.

\$25 Off Blind Cleaning
Any Job Over \$100
With Coupon. Not valid with other offers.